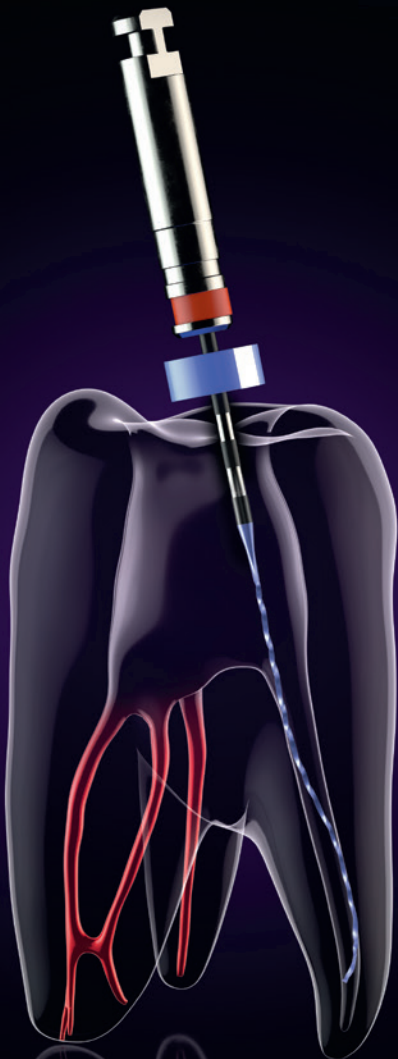


CLEANING

Improve your endo.
The universal mechanical
cleaning system.



- Revolutionary design provides enhanced ability to clean areas previously impossible to reach
- Exclusive tip



- Extreme expansion capacity optimization up to 100x its core size
- Seamless adaptation technology for all root canal morphologies



- Excellent resistance to cyclic fatigue
- Extreme flexibility and agility



- Uniquely designed for thorough debris removal
- Exceptional dentine preservation features

Size : 25/.00
Speed : 800-1000 rpm
Torque : 1 Ncm

Availability: Refills in 21/25/31 mm
Sequences in 21/25 mm
(more information on www.fkg.ch/xpendo)

RETREATMENT

Available in 30/.00 for retreatment
(XP-endo® Finisher R)

TREATMENT



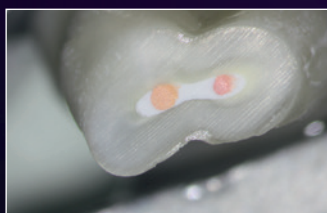
XP-endo[®] Finisher



Radiograph showing the bucco-lingual aspect of the maxillary first premolar



Cross-section 1 mm from the apex



Cross-section 7 mm from the apex

© Dr. Hubert Gołębek (Poland)
and Dr. Martin Trope (USA),
All rights reserved



XP-endo[®] Shaper

www.fkg.ch/xpendo

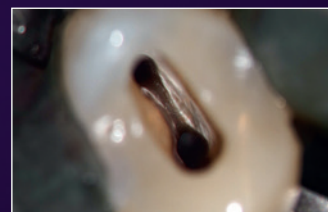
RETREATMENT



XP-endo[®] Finisher R



Photograph illustrating a case of retreatment before instrumentation



*After instrumentation
no debris is seen*



*Root filling material removal during
retreatment case*

© Dr. Gilberto Debelian (Norway)
and Dr. Klaus Lauterbach (Germany),
All rights reserved